



K.S. RANGASAMY COLLEGE OF TECHNOLOGY
(Autonomous)

Tiruchengode – 637 215, Namakkal, Tamil Nadu

ADMISSION POLICY

Version 5.0

MAY 2025

Index

	PREAMBLE		Page No.
1	1.1	Vision	01
	1.2	Mission	01
2	ADMISSION POLICY		02
3	PROGRAMMES		03
4	ELIGIBILITY CRITERIA FOR ADMISSION		03
	4.1	Eligibility Criteria for Admission to Under Graduate Engineering/Technology Programmes	03
	4.2	Eligibility Criteria for Admission to Various Post Graduate Programmes	04
	4.3	Eligibility Criteria for Research Programmes	05
5	ADMISSION PROCEDURE		05
	5.1	Admission procedure for various Under Graduate Engineering/Technology	05
	5.2	Lateral Entry Admission	05
	5.3	Admission procedure for all the Post Graduate Programmes	05
6	SCHEMES FOR SCHOLARSHIP		06
	6.1	KSR Merit Scholarship	06
	6.2	Maatram Foundation	06
	6.3	KSR Help Fund	07
	6.4	Faculty and Staff Ward Scholarship	07
	6.5	Management Scholarship	08
	6.6	KSR Sports Scholarship	08
	6.7	NCC Cadets	08

1. PREAMBLE

KSRCT is a prestigious institution with a long history of excellence in Engineering, Science, and Technology. Multidisciplinary academic programs are offered in engineering, science, and technology fields. The institution is consistently seeking innovative methods to improve higher education quality, as well as responding to global changes in the field of education. In addition to world class infrastructure and world-class research facilities, the Institution boasts a team of dynamic and outstanding faculty, innovative pedagogical practices, and world-class pedagogical practices. This glorious Institution is functioning under the dynamic leadership of Lion. Dr.K.S.Rangasamy, Founder-Chairman, and Shri.R.Srinivasan, Chairman.

1.1 Vision

To produce the most competent Scientists, Engineers, Technologists, Entrepreneurs, Managers and Researchers through quality Education.

1.2 Mission

To achieve academic excellence in Science, Engineering, Technology, Management and Research through objective and innovative teaching methods; dedicated and duty conscious faculty; continual and consistent updation of facilities; welfare and quality improvement of the faculty and a system of continual process improvement.

2. ADMISSION POLICY

The purpose of this policy is to provide procedures and guidelines for admissions to K.S.Rangasamy College of Technology, Tiruchengode for management quotas, and for government quotas as set forth by Anna University, Chennai. It relates to the admissions to various undergraduate and graduate programs offered by the institution. An amendment to this policy with due approval from the Board of Management is required to modify the basic rules regarding admissions. In

accordance with the Board of Management's approval, this policy framework replaces the earlier policy framework.

3. PROGRAMMES

- The total Programmes offered by the Institution are divided into three categories. They are Under Graduate (UG) Programmes, Post Graduate (PG) Programmes and Research Programmes.
- Under UG Programmes the following programmes are offered
 - Engineering/Technology
- Under PG Programmes the following programmes are offered
 - Engineering/Technology
 - Master of Business Administration

4. ELIGIBILITY CRITERIA FOR ADMISSION

4.1 Eligibility Criteria for Admission to Under Graduate Engineering / Technology Programmes:

1. B.E.-Civil Engineering
2. B.E.-Computer Science and Engineering
3. B.E.-Electrical and Electronics Engineering
4. B.E.-Electronics and Communication Engineering
5. B.E.- Electronics Engineering (VLSI Design and Tech.)
6. B.E.-Mechatronics
7. B.E.-Mechanical Engineering
8. B.Tech. - Artificial Intelligence and Data Science
9. B.E. - Artificial Intelligence and Machine Learning
10. B.Tech.- Biotechnology
11. B.Tech. - Food Technology
12. B.Tech.-Information Technology
13. B.Tech.-Textile Technology

A candidate should pass 10+2 or equivalent with at least a 45% average in Physics, Chemistry, and Mathematics. A pass in the HSC(Academic) or its equivalent

with a minimum average mark in Mathematics, Physics and Chemistry of 45%, 40%, 40% and 40% based on OC, BC including BCM, MBC & DNC, and SC/SCA/ST.

A pass in any of the HSC (Vocational Subject) with any of the Engineering related subjects, namely Mathematics, Physics or Chemistry, with a minimum average percentage of 45%, 40%, 40%, and 40% based on OC, BC including BCM, MBC & DNC, and SC/SCA/ST.

4.2 Eligibility Criteria for Admission to Various Post Graduate Programmes:

1. M.E. - Structural Engineering
2. M.E. - Industrial Safety Engineering
3. M.E. - VLSI Design
4. M.Tech. - Food Technology
5. M.Tech. - Textile Technology
6. M.Tech. - Nano Science and Technology
7. M.Tech. - Bio Technology
8. M.Tech. - Data Science
9. MBA - Master of Business Administration
10. MCA - Master of Computer Application*

In order to get admissions to the Post Graduate Programmes, the candidates must fulfill the eligibility criteria as per the norms of Anna University, Chennai.

M.E./M.Tech.	A pass in a recognized Bachelor's Degree or equivalent in the relevant field and obtained atleast 50% (45% in the case of BC, BCM, MBC, SC, SCA and ST candidates belonging to Tamil Nadu) in the qualifying degree examination.
MBA - Master of Business Administration	A pass in a recognized Bachelor's Degree of minimum 3 years duration and obtained at least 50% (45% in the case of BC, BCM, MBC, SC, SCA and ST candidates belonging to Tamil Nadu) in the qualifying degree examination in any discipline after 10+2 school level
MCA - Master of Computer Application*	A pass in a recognized Bachelor's Degree of minimum 3 years duration in B.C.A. or B.Sc. (Information Technology / Computer Science or equivalent), or a pass in a recognized Bachelor's degree of minimum 3 years duration (in disciplines other than the ones mentioned above) with Mathematics at 10 + 2 level or at Graduation Level and obtained at least 50 % (45% in the case of BC, BCM, MBC, SC, SCA and ST

	candidates belonging to Tamil Nadu) in the qualifying degree examinations.
--	--

* Subject to approval

4.3 Eligibility Criteria for Research Programmes:

PROGRAM	ELIGIBILITY CRITERIA
Doctor of Philosophy (Ph.D.)	A Pass in Master's Degree from a recognized University in the respective field of study of Research, as per the norms of Anna University, Chennai

5. ADMISSION PROCEDURE

Admission for an academic year commences from April and ends by September, every year based on the Anna University, Chennai instructions and guidelines.

5.1 Admission procedure for various Under Graduate Engineering / Technology

- **Government Quota**

A total of 65% of admissions to all the above mentioned programmes are based on the counseling process conducted by Anna University, Chennai.

- **Management Quota**

35% of the total seats are allocated for Management Quota.

5.2 Lateral Entry Admission

According to Anna University, Chennai regulations, 10% seats and lapsed first-year seats can be filled by institutions. The Institution has the option of admitting the student in the second year through later entry system as per the university norms.

5.3 Admission procedure for all the Post Graduate Programmes

The qualifying examination marks are the basis for admission to all Post Graduate Programmes at KSRTC. However, preference is given to the candidates who have GATE, GAT-B score (for M.E. / M.Tech. admissions) and TANCET score (for MBA) admissions.

In addition to GATE, GAT-B, and TANCET qualified candidates, applications for admission to these programs are also invited every year in May. After the scrutiny of applications, admissions are given on the basis merit list prepared on the basis of marks secured in the Qualifying examination.

6. SCHEMES FOR SCHOLARSHIP

The management offers different scholarships for economically disadvantaged students with a good academic record in the HSC, for students with physical disabilities, for single parents, for female scholarship, for faculty and staff wards, and for students with good sports and game records. Those scholarships are offered in order to improve the quality of life of above mentioned eligible students in order to bring positive changes and developments to society and the country as a whole.

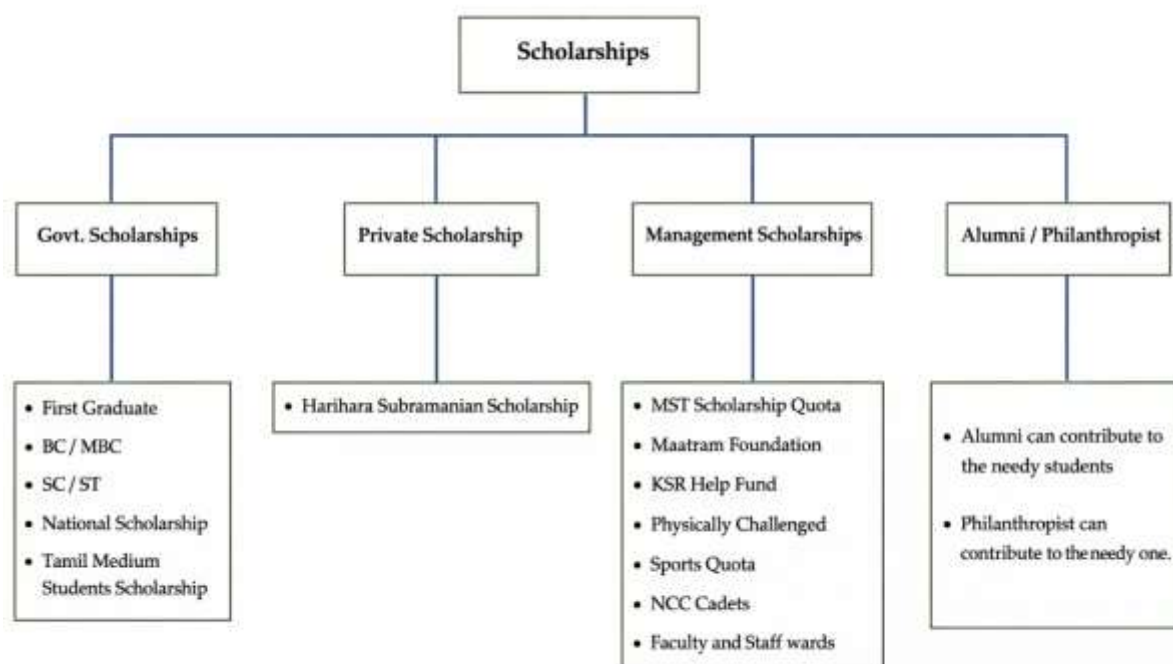
The students who are awarded any scholarships are also eligible for this benefit with the condition of income of their parents, which should be below income tax deduction limit prescribed by the Govt. for the corresponding financial year. All scholarships will be provided to the students admitted through Govt. quota and Management quota.

6.1 KSR Merit Scholarship

Seats (both UG and PG) are allocated for students from economically backward segment referred by NGOs and other organizations. The scholarship may vary from 10% to 100% based on the score secured in the HSC marks and scholarship test conducted by college. Students admitted under this quota will be given waiver of tuition fee and hostel fee.

6.2 Maatram Foundation

The Maatram Foundation Scholarship is offered every academic year to eligible students based on prescribed criteria. Seats in both Undergraduate (UG) is allocated to students from economically backward backgrounds. Students admitted under this scholarship scheme are provided with a 100% scholarship waiver of college fees and hostel fees.



6.3 KSR Help Fund

KSR Help Fund is an institutional support initiative through which alumni contribute financial assistance to support students for academic purposes. The fund is administered through the Alumni Cell in coordination with the respective departments and is extended to economically backward students every academic year. Applications are invited annually from eligible students through the departments, and the beneficiaries are finalized based on a screening and evaluation process carried out by an expert committee. Upon approval, the financial assistance is disbursed to the selected students to support their educational expenses, as per institutional guidelines.

6.4 Faculty and Staff Ward Scholarship

The Management provides 25% of concession in tuition fee to the wards of the Teaching and Non-teaching staff members working in the Institution. The members of faculty and staff must submit the application form to the principal to avail the fee concession for their wards.

6.5 Management Scholarship

Every year, the management offers scholarships for meritorious students across all departments based on the cut-off criteria. The scholarships are categorized into five tiers: Full Fee waiver, Colleges fees waiver, 25% Tuition fee waiver, 50% Tuition fee waiver and 100 % Tuition fee waiver.

6.6 KSR Sports Scholarship

Seats (both UG and PG) are allocated for candidates who excel in sports. Students given admission under Sports Quota are given 25% to 100% of wavier of college fee and hostel fee based on the International, National and State level participation and winning performance. The Physical Director is requested to submit the details of merit list and method of selection to the Principal for admission approval. Seats that are vacant in this category are transferred and filled regular management quota.

6.7 NCC Cadets

The uniqueness of NCC lies in its focused training activity round the year through highly dedicated Armed Forces and NCC Cadre personnel to achieve laid down aims and objectives for youth empowerment. In order to provoke interest and to the beneficial of the students 50% hostel fee concession is given for NCC cadets those who are staying in hostel. The 50% tuition fee concession for National achievers (RDC, TSC, SPORTS) and 25% tuition fees concession for other achievers (NIC, SNIC, PARA BASIC, BLC, ALC, AAC, NTC) for day scholars NCC Cadets. The NCC Officer will submit the details of cadets to the Principal for approval to avail the tuition and hostel fee concession for the cadets. The college also provide free uniforms, state and national level camp expenses, medical expense, and cash award for special achievers.

6.7 Harihara Subramanian Scholarship

The Goal of this program is to support young talent from economically backward sections of the society with scholarships to pursue higher education in the field of engineering/technology. Students must have scored 70% or above in both 10th and 12th standard examinations. Open to First-Year students from the following streams: CSE / IT / ECE / EEE / VLSI / AI & DS / AI & ML, Both Counselling and Management quota students are eligible to apply and Annual family income should be ₹3.0 lakhs or below.